



THE
LUTHERAN
WORLD
FEDERATION

World Service

member of **actalliance**

ANNUAL REPORT

LWF

World Service Ethiopia

2021



Kusho Hussien, 50, sewing clothes at her tailor shop in Shedder refugee camp, Somali Regional State, Ethiopia. Kusho bought her sewing machine through the seed money support she received from UPR project implemented.

Table of Content

| | |
|---------------------------|----|
| Representative's message | 04 |
| WLF Ethiopia at a glance | 05 |
| Programmatic Achievements | 08 |
| Tigray Response | 17 |
| Financial Performance | 21 |
| Partnerships | 22 |
| Human Resources | 23 |

Zeyneb Ibrahim, 40, is one of the beneficiaries of GRHA project, implemented by LWF in Babile, Oromia region Ethiopia. She is able to better her life through seeds, goats and farm materials she received from UPR project.



Representative's message

The end of the year 2020 was a presage as to how the year 2021 was going to unfold with the eruption of the Tigray conflict in November 2020. The Tigray conflict and its spillover into Amhara and Afar Regional States as well as other crises meant that LWF's programmatic focus swung sharply to humanitarian response.

LWF operated in five regional states of Amhara, Benishangul Gumuz, Oromia, Somali and Tigray. The total budget for 2021 was EUR 5,915,109 with 3,620,278 recognized in 2021, out of which 70% went to humanitarian response and the remaining 30% to development programming. Most of the funding that LWF was not able to implement was mostly due to humanitarian access issue particularly affecting the Tigray response. In addition, to the spill-over conflict into Amhara Region, LWF's ongoing development programming, mainly the irrigation schemes under construction in Bugna and Lasta woredas in North Wello Zone were suspended due to the conflict situation.

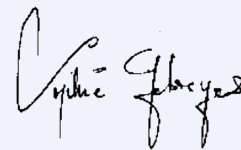
Besides the Northern Ethiopia conflict, Ethiopia was also affected by the effects of the COVID-19 pandemic as well as a devastating desert locust infestation. The COVID-19 pandemic also affected overall income as well as

operations however, travel and normal working modalities were restored during much of the year while the locust infestation severely affected livelihoods in the affected regions.

Despite the access challenges LWF Ethiopia reached a total of 313,024 of people through development and humanitarian programming, out of whom 158,570 were women and girl children, representing 48% of the total number of population reached.

Thank you on behalf of the people to all of our partners for your generous support and for making our work possible.

We look forward to the coming year with hope for a better future and enhanced partnership.



Sophie Gebreyes
Country Representative

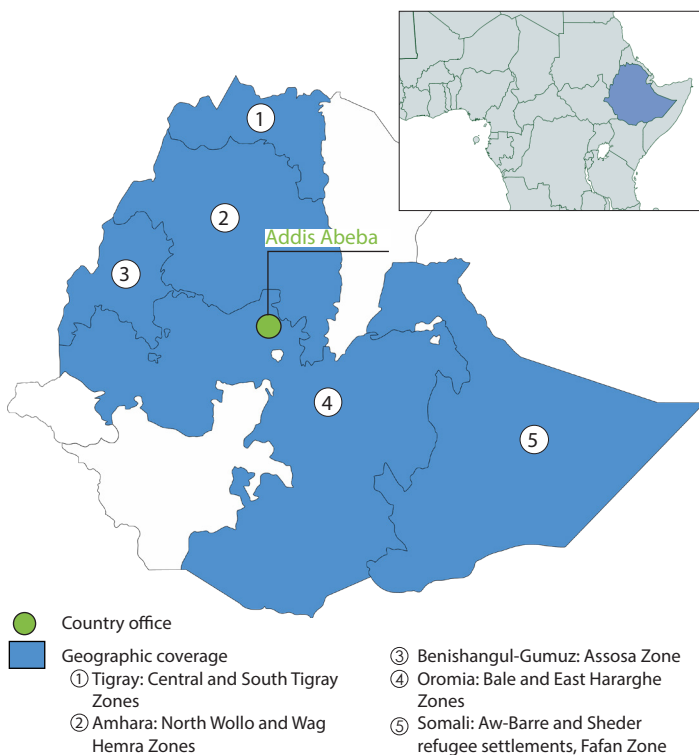


LWF - Ethiopia

Ethiopia is one of the world's fastest growing countries with an estimated population of 110 million people. Yet despite increased economic growth in the past decade, Ethiopia still ranks near the bottom of the Human Development Index. In the country since 1973, the Lutheran World Federation (LWF) responds to crises and needs assisting refugees, Internally Displaced People (IDPs) and vulnerable local communities. In 2021, the country program supported more than 313,000 persons through psycho-social, livelihoods, food security, Disaster Risk Reduction (DRR), environmental protection and Water, Sanitation & Hygiene (WASH) projects.



LWF Ethiopia at a glance



Staff in 2021

| | | |
|----------|---------------|------------|
| National | International | Volunteers |
| 156 | 1 | 1 |

Total: 158

Budget in 2021
5.9 million €

Projects in 2021
34

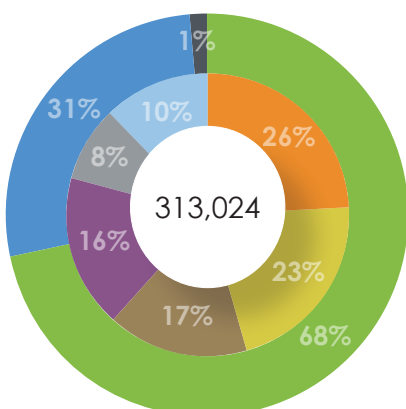
Crises and needs

- Refugees and IDPs
- Droughts and climate change
- COVID-19
- Conflicts and armed groups
- Poverty

Sectors of intervention

- Disaster risk reduction (DRR)
- Food security
- Food assistance
- Water, Sanitation and Hygiene (WASH)
- Community-based Psychosocial
- Environmental protection

Population outreach 2021



| Gender & age | Group |
|--------------|------------------|
| Women +18 | Local population |
| 79,976 | 211,840 |
| Men +18 | IDPs |
| 71,825 | 97,558 |
| Girls 5-18 | Refugees |
| 52,727 | 3,626 |
| Boys 5-18 | |
| 49,828 | |
| Girls -5 | |
| 25,875 | |
| Boys -5 | |
| 32,795 | |

The program mainly support:

- Communities at risk
- Refugees
- Internally displaced people (IDPs)

Our work

LWF Ethiopia's country program is grounded in the three strategic areas of intervention: livelihoods, quality services and increasingly in protection and social cohesion following the Civil Society Proclamation. Gender and climate justice cut across all of LWF Ethiopia's programming as key areas of focus. In addition, in 2020 and 2021, the program responded to the COVID-19 pandemic through protection kits and food distribution as well as awareness raising campaigns.



PROTECTION AND SOCIAL COHESION

- Promotion of community-based psychosocial support
- Provision of Personal Protective Equipment (PPE)
- Disaster Risk Reduction
- COVID-19 awareness raising campaign



LIVELIHOODS

- Promotion of food security
- Promotion of conservation agriculture and agroecology
- Promotion of savings and credit schemes
- Natural resource management
- Renewable energy promotion
- Adaptation and mitigation to climate change



QUALITY SERVICES

- WASH
- Cash transfer
- Food assistance



CROSS-CUTTING ISSUES

- Gender justice
- Climate justice
- Core humanitarian standards
- Empowerment and rights-based approach

Voices from the field

Amidst the unrest in Ethiopia, the LWF and its partners are striving to deliver aid and create safe spaces for vulnerable groups. Providing a local presence that focuses on relief and emergency care can be a source of hope and dignity when social cohesion is scarce. LWF Ethiopia is currently running a child-friendly space in Mai Weyni where 61 boys and girls spend their mornings and afternoons everyday learning and playing. They have access to toys (dolls, Lego, learning materials) and are supervised by four LWF staff members who are all members of the IDP community. Sophia Gebreyes, LWF Ethiopia Representative, explains: "children are the most innocent victims of the Northern Ethiopia crisis having been exposed to brutalities of war, faced starvation and suffered from thirst while being displaced multiple times. And yet, they are also the most resilient, bringing fun, smiles and joy wherever they are present."



Expenditures

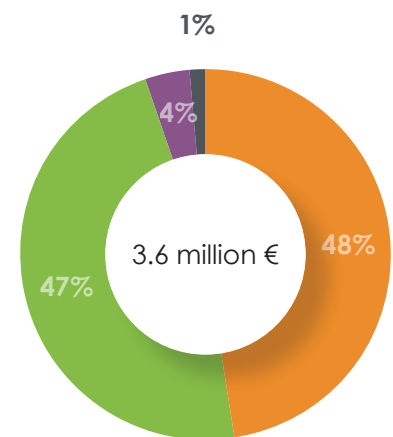
Recognized and spent 2021

Quality services
1,717,277 €

Livelihoods
1,702,179 €

Protection and social cohesion
146,343 €

Systems & practices for quality programming
41,463 €



Key results 2021

24,358

individuals received psychosocial services that contributed to reduced stress and enhanced peaceful coexistence

7,496

individuals have increased access to sufficient food all year round

16,026

individuals affected by desert locust infestation recovered from its impact through support with cash and NFIs

Contact

Country Representative in Ethiopia:
Sophie GEBREYES
Geneva Coordinator: Miina PUNTILA
Arada sub-city, District 06, No. 910
P.O. Box 40132, Addis Ababa, Ethiopia
+251 1111553288/0308
lwf.ethiopia@lutheranworld.org
ethiopia.Lutheranworld.org

Partners



Your donation
in good hands.

LWF - World Service

Program

Project areas

Amhara Region- Bugna woreda

Location: Bugna
Project: Building a resilient Community
Donor: FELM
Sectors: Food security, conservation of biodiversity, natural resource management, renewables, livelihoods
Location: Lasta-Lalibela
Project: Lasta-Lalibela Food Security project
Donor: CLWR
Sectors: Food security
Male beneficiaries: 867
Female beneficiaries: 2,615

Benishangul-Gumuz - Assosa Zone

Location: Bambasi
Project: LWF Coordination Office in Bambasi and Gur Shembola refugee camp for Sudanese and South Sudanese refugees
Donors: ACT Church of Sweden, GIZ
Sectors: CBPS, Livelihoods
Location: Bambasi
Project: Qualifications and Employment Perspectives (QEP) project
Donors: GIZ
Sectors: Livelihoods
Male beneficiaries: 960
Female beneficiaries: 1,040

Oromia Region - Bale Zone

Location: Gasera
Project: Gasera Sustainable Livelihood and Youth Economic Empowerment Project
Donor: ACT Church of Sweden, Evangelical Lutheran Church in America and Vehicle sale proceeds
Sectors: Livelihood and Food security
Location: Rayitu, Laga Hidha, Dawe Serer
Project: Drought Emergency Response project
Donor: ECHO/ERM
Sectors: WASH and Livelihoods
Male beneficiaries: 24,360
Female beneficiaries: 24,368

Somali Region

Location: Kebribeyah
Project: Kebribeyah Climate Resilient Livelihood Project Proposal
Donor: ICA
Sectors: WASH, Livelihoods and Climate change resilience
Male beneficiaries: 10,179
Female beneficiaries: 11,029
Location: Kebribeyah
Project: Skill Development Project
Donor: ILO
Sectors: Livelihoods
Male beneficiaries: 140
Female beneficiaries: 60

Project areas

Tigray region

Location: Alamata, Enderta, Mekelle and Chercher
Project: Conflict IDP response project
Donor: Act COS/ SIDA (ETH 201 and ECHO/ERM)
Sectors: WASH, Cash, CBPS/protection and Shelter /NFI
Male beneficiaries: 32,577
Female beneficiaries: 33,910

Location: Axum, Abi Adi, Adet, Chercher, Endamehoni, Ofra, Alamata and Raya Azebo
Project: Life-saving assistance through WASH services to vulnerable and most affected communities
Donor: OCHA/EHF
Sectors: WASH
Male beneficiaries: 59,941
Female beneficiaries: 62,387

Location: Maychew, Alamata, Mehoni, Raya Azebo and Ashungura
Project: Emergency life saving assistance through emergency NFIs and shelter NFIs to IDPs
Donor: CERF and RRF/IOM
Sectors: Shelter NFIs and Emergency NFIs
Male beneficiaries: 6,860
Female beneficiaries: 7,140

AwBarre and Sheder refugee settlements

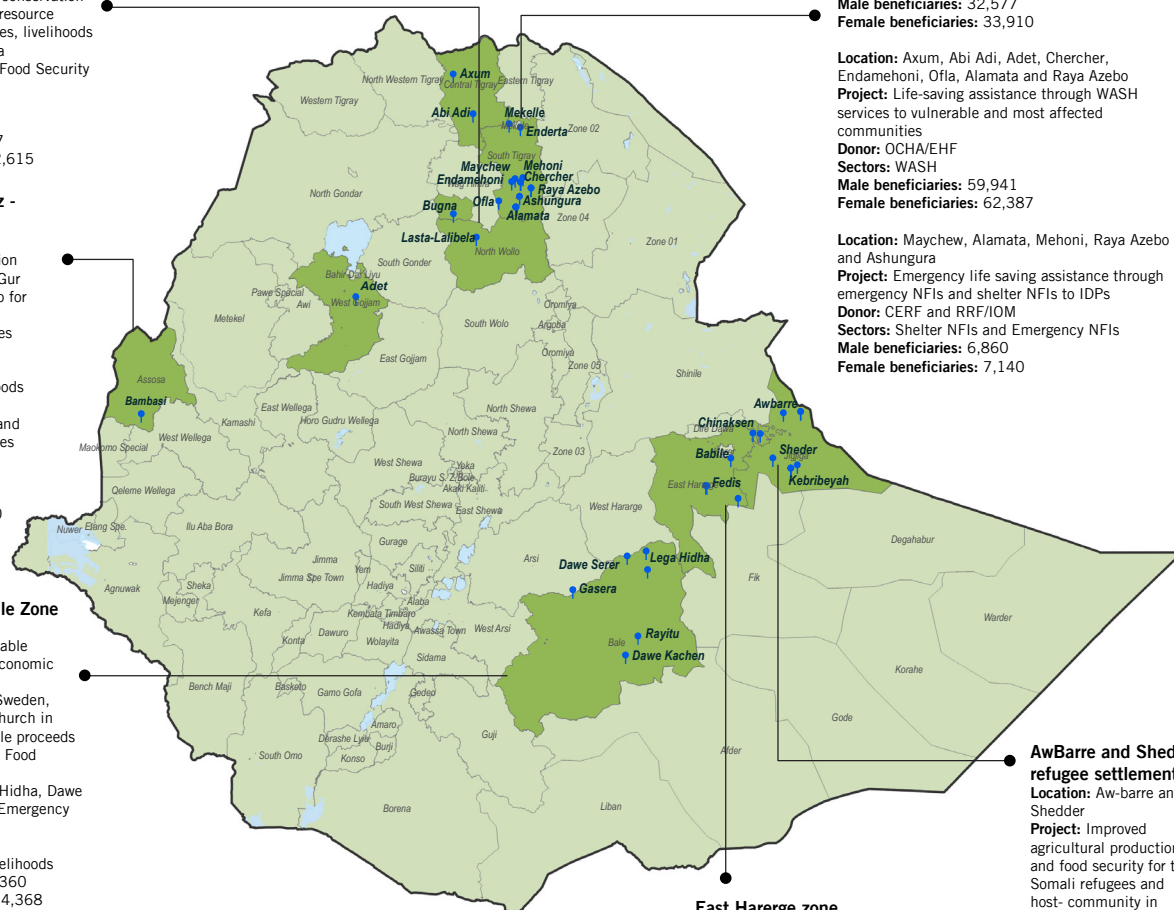
Location: Aw-barre and Sheder
Project: Improved agricultural production and food security for the Somali refugees and host-community in Aw-barre and Sheder camps
Donor: UPR
Sector: Protection

Location: Aw-barre
Project: Qualifications and Empowerment Perspectives (QEP) project
Donor: GIZ
Sector: Livelihoods
Male beneficiaries: 240
Female beneficiaries: 260

East Harerge zone

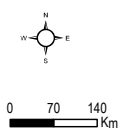
Location: Babile, Fedis and Chinaksen
Project: Gender Responsive Humanitarian Assistance to Conflict Affected IDPs in East Hararghe Zone
Donor: CLWR-IHA/GAC
Sectors: Shelter and NFIs, WASH, Livelihoods and Sexual Reproductive Health and Rights

Location: Fedis, Awbare, Chinaksen and Kebribeyah
Project: Desert Locust Response project
Donor: BftW
Sectors: Livelihoods
Male beneficiaries: 15,499
Female beneficiaries: 13,681



Legend

- 2021 ongoing projects
- National boundary
- Intervention zones
- Open water
- Zone boundary



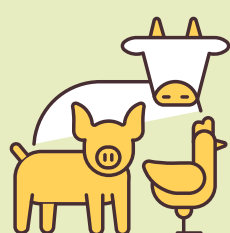
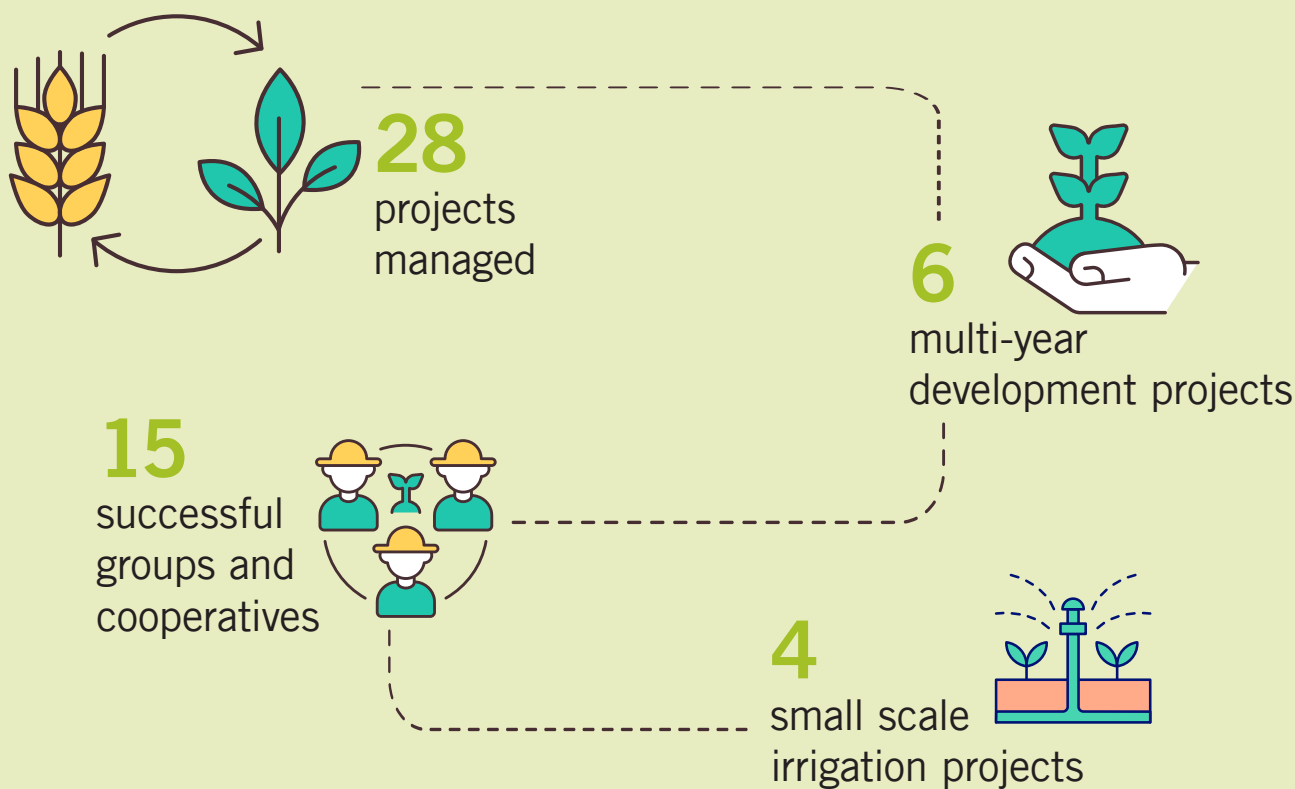
A young girl with dark skin and eyes is the central focus. She is wearing a bright yellow headscarf adorned with small silver beads. Her dress is red with white circular patterns and a decorative border. She is leaning against a tree trunk, holding a green branch. The background is slightly blurred, showing more of the tree and a hint of an orange structure.

Programmatic Achievements

LWF's programming in 2021 concentrated in the three LWF program priority areas of livelihoods, quality services and protection and social cohesion through an integrated approach to respond to the multiple challenges faced by its target communities.

Nime lives in Shedder refugee camp in Somali regional state, Ethiopia. Nime's family is one of the beneficiaries of UPR project implemented by LWF.

Livelihoods



Businesses include such occupations as poultry, dairy farm, metal work, cafeteria, youth center, small scale irrigation using dewatering pump and retail trade.



Livelihoods

LWF managed 28 projects in 2021 and among these, 6 were multi-year development projects being implemented in the Amhara, Oromia and Somali regional states. These multi-year development projects were funded by ACT Church of Sweden (CoS), Bread for the World (BfdW), Canadian Lutheran World Relief/Canadian Foodgrains Bank (CLWF/CFGB), International Labour Organization (ILO), Evangelical Lutheran Church in America (ELCA), Finnish Evangelical Lutheran Mission (FELM) and the Icelandic Church Aid (ICA) and CoS in partnership with the Swedish International Development Assistance (SIDA), the German Government, Global Affairs Canada and the Ministry of Foreign Affairs Iceland. The development projects include interventions in agriculture including the construction of small-scale river diversions for irrigation, natural resources conservation, capacity building including introduction of improved agricultural practices together with inputs and climate resilience. Through these interventions, LWF was able to organize more than 15 successful groups and cooperatives composed by 10 - 15 members each and engaged in income generating activities. The development projects were aimed at ensuring self-reliance, resilience and empowerment. The businesses include such occupations as poultry, dairy farm, metal work, cafeteria, youth center, small scale irrigation using dewatering pump and retail trade. The major achievements have been that the groups are engaged in various gainful businesses and they are functional and running. Their members earn on average 25-37 Euro per month as income from the business.



Mariam Mohammed, 42, feeds her goats she bought through the start up capital she received from UPR project.



Kusho Hussen, 50, maintains her backyard vegetables using steel hoe given to her by UPR project implemented by LWF.

One of the notable achievements of the Livelihoods program is the pilot vegetation index crop- insurance scheme introduced in the Gursum woreda targeting 400 farmers that was fully accepted and supported by the targeted farmers and local government officials. The scheme offered guarantee to the farmers at the time of drought and crop failure. In 2021, 200 farmers who suffered crop losses to the prevailing drought in 1 kebele were eligible for loss and damage insurance for ETB 792,000 (14,407 Euro) or 72 Euro each. LWF paid ETB 720,000 (Euro 13,615) on behalf of the targeted farmers or 34 Euro per farmer for the 400 farmers in premium. The promotion of insurance scheme has been challenging however getting this type of compensation will strengthen farmers' understanding of the importance of insurance and transferring risks. Without insurance this would have been a total loss with no means of recouping the loss and damages. LWF implemented 4 small scale irrigation projects in 2021; two in Gursum woreda, East Hararghe Zone in Oromia Regional State and in Bugna and in Lasta woredas in North Wello Zone in Amhara Regional State which at the end of the year stood at different level of completion with the two schemes in Gursum being completed and the ones in North Wello suspended as a result of the spillover of the Tigray war in the Amhara Region and especially in North Wello Zone.

Interventions in the development sectors benefited a total of 211,840 local community members (106,603 female, 105,237 male).

Quality Services



25,941

(13,698 female, 12,243 male)
have been reached by the
lifesaving assistance.

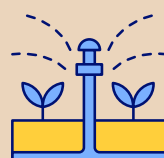


11,900

individuals (6,600 female, 5,300
male) received provision of seeds,
small ruminants and unconditional
cash

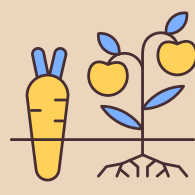
65,984

reached by respond
to the COVID-19
emergency



400

beneficiaries were targeted and benefited
from two irrigation schemes in the Bambasi
refugee camp that shelters Sudanese
refugees.



400

beneficiaries are organized into production and
marketing groups and they are able to produce and
sell different vegetables three times a year.

Quality Services

In 2021, in addition to the on-going refugee assistance projects, LWF has been responding to humanitarian crises as a result of conflict, drought and desert locust infestation. The year 2021 was marked by massive conflict-induced displacement mainly due to the eruption of the Tigray conflict at the end of the 2020. The conflict between the Ethiopian Federal Government Forces and the Tigray Region Special Force resulted in displacement of over 400,000 people within the region. Despite no existing presence since the 1970s and the 1980s when LWF ran a massive relief operation in the region, LWF Ethiopia given the complexity of the crisis and massive needs quickly invoked the humanitarian imperative and quickly established its operation in Mekelle, Tigray Region with the logistical support of its member Church and service delivery arm, the Ethiopian Evangelical Church Mekane Yesus (EECMY)-Development and Social Services Commission (DASSC). Very rapidly, LWF was able to intervene in lifesaving activities targeting IDPs in the Mekelle, Enderta, South Eastern and Southern zones. LWF provided assistances in WASH, shelter NFIs, food security, cash and protection. A total of 25,941 IDPs (13,698 female, 12,243 male) have been reached by the lifesaving assistance. Emergency Response Mechanism (ERM)/ECHO, ACT CoS/SIDA, Ethiopian Humanitarian Fund (EHF)-OCHA, Rapid Response Fund (RRF) and Central Emergency Response Fund (CERF)-IOM, FELM, ICA, Evangelical Lutheran Church in America, Australian Lutheran World Service (ALWS), German National Committee (GNC), CLWR/GAC, Evangelical Lutheran

Church in Wurttemberg (ELCW) and Primate's Relief and Development Fund were the funding partners for the emergency response or humanitarian projects in 2021.

Due to the spillover of the conflict in Tigray to the Amhara and Afar regions, the humanitarian needs in northern Ethiopia increased dramatically. According to UNICEF's Humanitarian Situation Report No. 8 for September 2021, a total of 2,105,387 IDPs (over 1.7 million people in the Amhara Region alone) were displaced across the three regions of Tigray, Amhara and Afar.

LWF, with funding from its back donors, responded to the increasing mass displacement in the Amhara region benefiting 10,800 individuals (58% female) who fled active conflict in the North Shewa, South Wollo, North Wollo, Waghimera, and Oromia Special Zones of the Amhara region. The support provided were cash, food and shelter NFIs. The assistance contributed to saving of lives of the most vulnerable i.e. children, women and people living with disabilities who were prioritized in the beneficiary selection process.

In addition, LWF responded to the East African desert locust invasion that damaged crops and pasture in the Somali and Oromia regional states. The support, among others, included provision of seeds, small ruminants and unconditional cash that benefited 11,900 individuals (6,600 female, 5,300 male) in the Fafan and East Hararghe zones of the Somali and Oromia regions respectively. Further, LWF was able to respond to the COVID-19



Kusho Hussen, 50 sewing clothes at her tailor shop in Sheddar refugee camp, Somali Regional State, Ethiopia. Kusho bought her sewing machine through the seed money support she received from UPS project.

emergency in two woredas of Bale zone and one woreda of Fafan zone reaching 65,984 individuals (34,093 female, 31,891 male) through awareness creation campaigns on COVID-19 prevention and personal protective equipment (PPE) support to health personnel and health institutions.

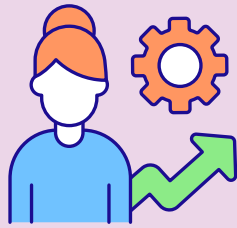
Refugee support has been one of the key focus of LWF's programming in 2021. Livelihoods and protection have been the thematic focus of LWF's interventions in the refugee camps. LWF constructed two irrigation schemes in the Bambasi refugee camp that shelters the Sudanese refugees. 400 beneficiaries were targeted and benefited from the project and of the total, 200 were locals. LWF in collaboration with the refugees and returnees service (RRS) facilitated issuance of work permits to the 200 refugees in Bambasi refugee camp. The 400 beneficiaries are organized into production and marketing groups and they are able to produce and sell different vegetables three times a year using the irrigation water. Likewise, 50 locals and 50 Somali refugees (37%

women) hosted in the Awbarre refugee camp in the Fafan zone of the Somali region are supported with sprinkler irrigation system with the necessary inputs and technical backstopping for the production of crops and vegetables. Sprinkler irrigation is new technology introduced for the first time in the region by LWF. LWF drilled borehole and provided generator to be used as power source for the borehole but to ensure sustainability of power source, the system is connected to the main electric grid. The system is installed and functioning and farmers started farming activities for production of vegetables. Similar to the refugees in Bambasi, the 50 refugees have been granted work permit by the Refugees and Returnees Service (RRS) with the facilitation of LWF. These two projects, apart from economic benefits, they have contributed to peaceful coexistence and social cohesion among the refugees and locals by creating opportunity for collaboration. The funding partner GIZ also supported various capacity building activities both technical and managerial.



IDPs in Dessie Teaching Collage Camp

Protection and Social Cohesion



28

women refugees have been able to exercise their rights to employment by engaging in businesses.

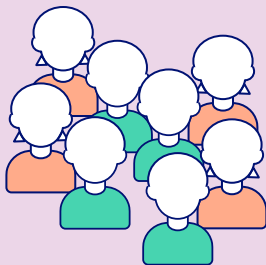


7,451

IDPs (3,871 female, 3,580 male) have benefited from the interventions in protection in the Tigray region.



The capacity building initiatives have helped the refugees to understand their rights well who are engaged in different right promotion activities with the project.



313,024

people reached by LWF in 2021



158,577
female



154,447
male

Protection and Social Cohesion

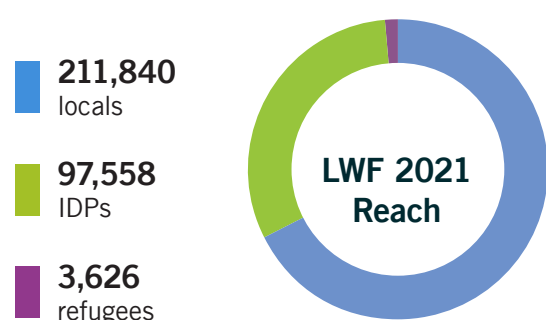
In the protection and social cohesion sectors, the most important activities that have been carried out in 2021 were protection of refugees' rights in the Jijiga refugee camps under the umbrella of universal periodic review (UPR), child protection and GBV as well as community based psychosocial support (CBPS). The UPR project that is under implementation in the Somali refugee camps, namely Awbarre, Sheder and Kebribeyah has helped the refugees exercise their rights mainly related to work permit and employment. With the support of inputs from the UPR project and facilitation of the work permit by LWF in collaboration with the Refugees and Returnees Service (RRS), 28 women refugees have been able to exercise their rights to employment by engaging

in businesses such as retail, goat fattening out of the camp which is in line with the comprehensive refugee response framework (CRRF) commitments. The right holders (refugees) and the duty bearers have been trained in diverse right issues such as gender and child protection. The capacity building initiatives have helped the refugees to understand their rights well who are engaged in different right promotion activities with the project.

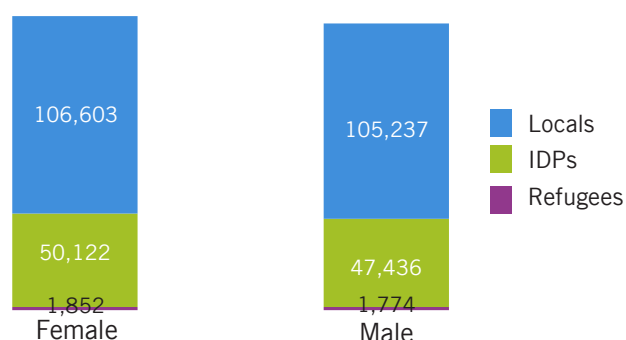
The protection activities under implementation in the Tigray region focused on child protection, capacity building to IDPs on gender based violence (GBV), prevention against sexual exploitation and abuse (PSEA) and CBPS. A total of 7,451 IDPs (3,871 female, 3,580 male) have benefited from the interventions in protection in the Tigray region.

Overall, in 2021 LWF reached a total of 313,024 people (158,577 female, 154,447 male). Of the total, 211,840 are locals, 97,558 are IDPs and the rest 3626 are refugees.

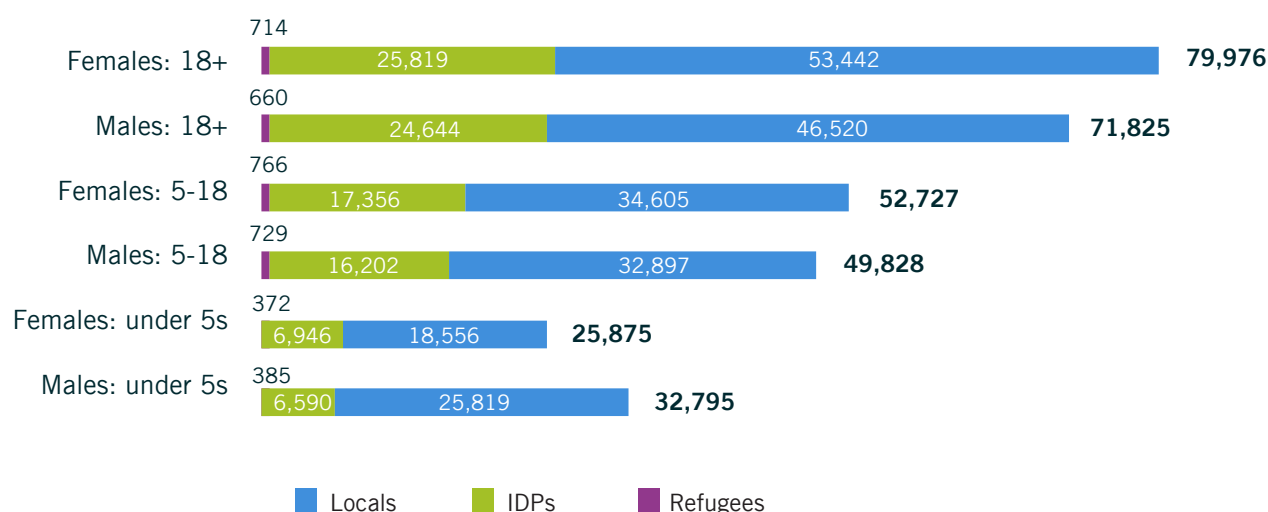
Breakdown by population groups



Total LWF reach in 2021 by gender and status



LWF 2021 reach actual by age group and beneficiary status



ILO-LWF Joint TVET Training Center for Refugees and host communities in Kebribeyah under the Prospects Initiative



In 2021, LWF officially launched the joint LWF and ILO Kebribeyah TVET Training Centre project under the Prospects Initiative designed to expand opportunities for skills and livelihoods among the forcibly displaced populations (FDP) and host community (HC) in Kebribeyah Woreda, Fafan Zone in the Somali Regional State.

Trainees selected from the refugees and host community will have the opportunity to access skills training in various trades including Finishing works, General Metal Fabrication and Aluminum works, Sanitary Installation works, Building Electrical Installation (BEI), drip irrigation and cobblestone Laying.

The objective of the project is in alignment with the Global Compact For Refugees and the Ethiopian Government pledges under the Comprehensive Refugee Response Framework (CRRF) designed to ease the burden on the Somali Regional Government which, for decades, has been hosting tens of thousands of refugees as well as to contribute to durable solutions to the extremely protracted refugee situation in Ethiopia.

On 01 September 2021, LWF and ILO presented the 3D architectural design to the President of Somali Regional State, His Excellency Ato Mustafa Oumer and all relevant stakeholders from the regional and district levels as well as the Refugees and Returnees Service (RRS).



His Excellency President Mustafa Oumer, centre (4th from left), Mr Jean-Yves Barba Prospects Manager, ILO, Left from the President and Sophie Gebreyes, LWF Country Representative, right from the President accompanied by ILO, LWF colleagues as well as the Jijiga TVET Head Mr Abdulahi Muhammed (left from Mr Barba).



NFI distribution in Chirchir, Southern Tigray

LWF Tigray response

At the end of 2021, LWF returned to Tigray after more than 30 years after the region slipped into yet another a crisis pitting the Tigray Regional Forces against the Federal Government, reminiscent of the conflict four decades ago.

LWF was quickly able to re-establish its presence in Tigray thanks to the excellent support from EECMY and EECMY/DASSC and through the deployment of Charles Masanga Omondi, the emergency expert from the LWF emergency hub in Nairobi, Kenya. LWF was able to start operation by February 2022 with an ACT appeal ETH201 funded by Act Alliance members ALWS, ACT COS., SIDA, ICA, ELCA and PWRDF. Since the act appeal, LWF was able to mobilize additional resources from the SIDA Rapid Response Mechanism, ECHO/ERM and IOM. LWF responded in Mekelle, Enderta, Alamata, Mehoni, Chirchir and Besober, targeting. Close to 150,000 in WASH, protection, community-based psychosocial support, Shelter/NFIs, food assistance and cash.

Emergency response in WASH and food to people internally displaced due to conflict in the Tigray region

Total number of Beneficiaries:



WASH NFIs to 4,500 households (54% female led)



Multipurpose cash to 1,009 (546F female led)

Donor:



ECHO/Emergency Response Mechanism through IRC

Budget:



€710,579

Impact/Outcome:



Conflict-displaced women, girls, children, the elderly and people with different abilities were provided with essential non-food items (NFIs).



NFI distribution in Raya Alamata, Tigray Regional State

Emergency life-saving assistance through emergency NFIs to IDP Households in Southern Zone in the Tigray Region

Total number of Beneficiaries:



2,000 households, 10,000 individuals (55% female)

Donor:



Rapid Response Fund/ IOM

Budget:



USD 87,888.36

Impact/Outcome:



Conflict-displaced women, girls, children, the elderly and people with different abilities were provided with essential non-food items (NFIs).

LWF Africa Hub Support to the Tigray Response

Profile - Charles Masanga Omondi

I come from Western part of Kenya where seeing a gun, leave alone hearing a gunshot is such a rare occurrence. Whenever a gunshot is heard, it becomes the village news headlines for a long time. Just like in most parts of the country, the closest one can come to a gun is when you meet police officers in regular patrol or in manned institutions like banks. This shows how much adjustment I had to undergo when I started working in armed conflict areas.

When I started working in the humanitarian sector, I travelled to many conflict affected countries in Africa with diverse geographical, political and socioeconomic contexts where I saw, first-hand, how armed conflicts have caused untold devastation in the lives of people in the continent. As a result, I thought I had seen all aspects of conflict until I went to Tigray Regional State in Northern Ethiopia.

When the Tigray conflict started on 3rd November 2020, LWF was part of the first UN led mission that carried out rapid needs assessment in the region. This was in mid-December when humanitarian access to the region was not yet possible due to the high risks involved. The first attempt to enter Tigray region for the assessment failed when UNDSS sent information that the situation was still too volatile to allow the mission to proceed. Most humanitarians who were part of the team gave up. It became clear that this was a high risk mission and making a decision to remain part of the assessment team was not an easy one. Consequently, the decision to proceed despite the challenges was made, following an intense engagement and close follow up of the situation led by the Country Representative and colleagues from Geneva Office (Global Humanitarian Coordinator, Regional Program Coordinator and Global security Coordinator among other staffs). As a result, LWF was among the few INGOs which managed to participate in the assessment, besides UN agencies.

From the first day I stepped foot in Tigray until the time when we started the emergency response, my perception about conflict changed drastically. I have come to conclude that it is difficult for one who only hears about conflict like any other daily news item to fully appreciate what conflict really means to the victims. It is until I found myself in the middle of what is now one of the worst conflicts in the World that I am now able to separate fiction from reality as far as consequences of conflict are concerned. I saw property damaged, food looted, millions of people displaced, women widowed and some suffered from grim sexual violence, children orphaned, businesses disrupted, education paralysed and basic services disrupted.





According to WFP, seven months into the war, 91% of the Tigray population required emergency humanitarian assistance¹. UNICEF revealed that the level of acute severe malnutrition (SAM) in Tigray in January 2021 was three times of the global WHO emergency threshold². The

past wars and conflicts in the country paint the same grim picture of human suffering. The cost of conflict are multifaceted and complex, ranging from destruction of human and physical resources to disruption in economic activities and social disorder. Conflict is the major and fundamental explanatory factor for poverty and backwardness in Ethiopia. It not only creates human misery but also suppresses economic activity. Resources shift from productive to destructive activities. Only time will tell the real consequence of the Tigray conflict not only in the region but in the whole country³.

In response to the conflict, LWF Ethiopia prioritized Tigray region. Preparation for the response ran simultaneously with the assessment. This reinforces the high priority that LWF places on saving lives through its emergency response initiatives. This has paid off as LWF is now among the partners supporting lifesaving programme in the areas. The response has spread from Tigray region to the neighbouring Amhara region. A total of about 147,000 individuals have so far benefited activities implemented by LWF through donation from various donors.

¹ WFP Ethiopia, Situation Report, Rome, Italy: World Food Program, 2021.

² Tigray's children in crisis and beyond reach, after months of conflict: UNICEF, 2021.

³ Conflict and economic performance in Ethiopia, Alemayehu Geda, 2002).



Financial Performance

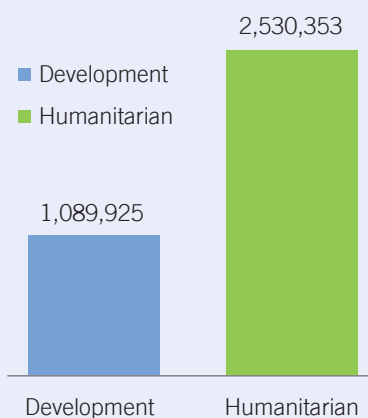
The total approved working budget for 2021 was EURO 5,915,109 million. Of the total working budget, 3.6 million Euro was utilized during 2021 which accounted for 58.2% of the annual budget. However, the key factor which contributed to the unutilized 41.8% is that most of the projects were approved in the semester of the year and thus carrying large sums of the budget to be spent in the following year.

Of the total budget in 2021, 70.4% was allocated to Quality Services or lifesaving emergency response activities, 26.4% to Livelihoods and the remaining 3.2% to protection and social cohesion programmatic areas.

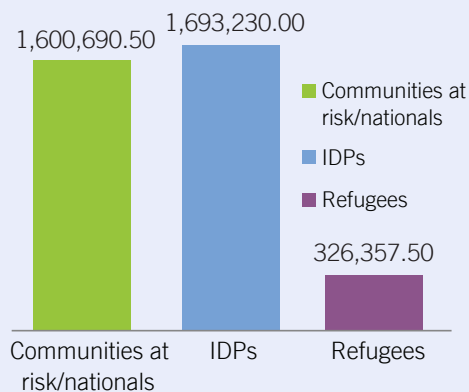
Income by donor



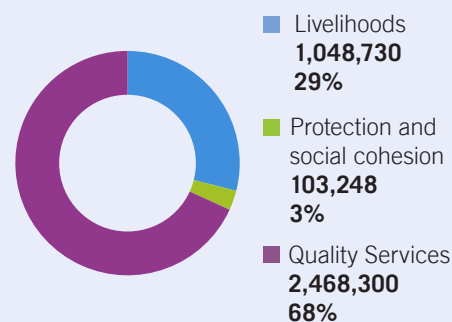
Income by program



Expenditure by sector



Expenditure by strategy



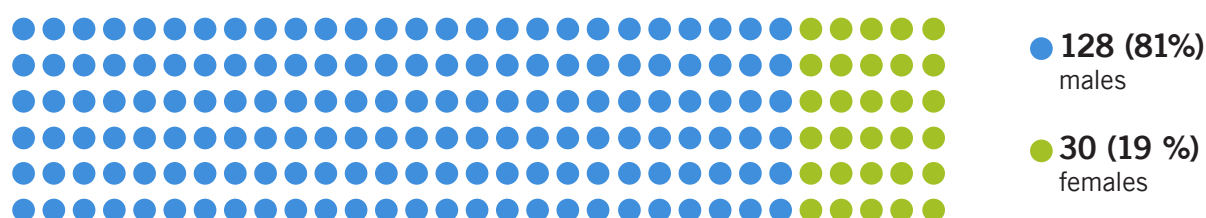
Partnerships



Human Resources

LWF Ethiopia employed a total of 158 staff in 2021 with 128 male staff representing 81% of the total number of staff and 30 female staff representing 19% of the total number of staff.

Overall gender parity in LWF Ethiopia shows a slight improvement over the last five years with female staff representing 16.6% of the total number of staff in 2017, 22% in 2018, 23% in 2019, 23% in 2020 and 19% in 2021.



Internship – Where are they now?

As part of promoting gender parity in LWF, LWF Ethiopia began internship for young female graduates in 2016 in order to attract fresh female graduates to the humanitarian and development sectors in Ethiopia. Nevertheless, despite valiant efforts this has been a challenge especially attracting women to management positions both at the country office and the field level. Since the Internship Program began, LWF has placed six interns in Program, Finance as well as in HR departments, giving them a practicum opportunity in an office environment, and thus paving the way for gainful employment in the future either within LWF or in similar organizations.

Name: Kalkidan Tadesse
Internship: Program
Dates: 02- 11-2016 to 30-04-2017
Presently working with: Accountant at Bethezatha Hospital, Addis Ababa

Name: Deborah Teferi
Internship: Program
Dates: 01-05-2018 to 10-05-2018
 (Intern)
 10-07-2018 to 30-09-2019
 (Junior Program Officer)
Presently working with: Program Officer at BftW, Addis Ababa



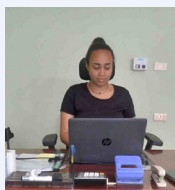
Name: Bemnet Haile
Internship: Human Resources
Dates: 03-08-2019 to 31-12-2020
Presently working with: HR Officer at Five-star elevator manufacturing PLC, Addis Ababa



Name: Girmawit G/Hiwot
Internship: Program
Dates: 10-02 2021 to 30-11-2022
Presently working with: HR Assistant at the International Medical Corps (IMC) in Semera, Afar



Name: Adeyabeba Abebe
Internship: Program
Dates: 13-12-2021 to 31-05-2022
Presently working with: HR Assistant at the International Medical Corps (IMC) in Asaïta Afar



Name: Helen Zenebe
Internship: Finance
Dates: 28-02-19 to 31 12-2021
 01-01- 2022
Presently working with: Promoted to Finance and Admin Assistant at LWF



Profile

Adeyabeba Abebe

Adeyabeba Abebe is one of the six interns who positively contributed to the work and mission of LWF Ethiopia through the internship program.

Adeyabeba Abebe was born and raised in Dessie, capital of South Wello Zone in Amhara Regional State. Her early childhood was a typical middle-class environment, the one of two children born to her parents, Dr. Abebe Abegaz and Kidest Ali. Adeyabeba's father is a Lecturer and her mother a Lawyer. Adeyabeba has one elder sister who made her childhood happy and memorable. Adeyabeba's academic career began at the Catholic Kidanemihret Primary and Secondary School. In 2014, she joined Dej Azmach Wondirad School. Upon completing preparatory studies, Adeyabeba pursued graduate studies at Mekelle and Wollo Universities where she obtained her Bachelor's and Master's Degrees in Economics and Project Management, respectively.

Adeyabeba came upon the LWF internship opportunity when she was looking for a job on *ethioJobs*, the online recruitment company. Adeyabeba was selected through the successful application and recruitment process and was offered the internship in the human resource department at the beginning of the 13th of December 2021.

Adeyabeba was very eager and enthusiastic from the first days of her internship to experience the office environment and contribute to the busy HR Department.

As in any organization, the LWF HR department has a strong organizational arrangement that can easily guide a newly employed intern, which Adeyabeba maximized during her internship. Throughout, her internship, Adeyabeba gained practical knowledge on how the human resource department of an organization operates and coordinates its activities with other departments to ensure the smooth running of the organization at all levels. Upon completing her internship with LWF, Adeyabeba said: 'I have gained very useful management skills including planning, organizing, directing, coordinating and control activities that I can bring to bear in my new job as HR Assistant at the international Medical Corps. I am grateful to LWF Ethiopia for giving me this opportunity.'



I have gained very useful management skills including planning, organizing, directing, coordinating and control activities that I can bring to bear in my new job. I am grateful to LWF Ethiopia for giving me this opportunity.







THE
LUTHERAN
WORLD
FEDERATION

World Service

member of **actalliance**

Lutheran World Federation

Addis Ababa, Ethiopia
Woreda 13, Kebele 02, House NO. 910
P.O BOX 40132
Telephone +251-11-1-550308
Fax +251-11-1552514
www.ethiopia.lutheranworld.org
Lwf.ethiopia@lutheranworld.org
Complaints.ethiopia@lutheranworld.org